



# Water Resistant Bonding & Repair Agent for Mortar



## PRODUCT DESCRIPTION

**INKA-SL**, is a multipurpose acrylic dispersion based emulsion used in cementitious mortars where excellent adhesion, fixing and water resistance properties are required.

## AREAS OF USE

**INKA-SL** is especially used;

- in renovation, reconstruction and repair jobs where high adherence is required,
- in production of mortars with high adherence capabilities,
- as an adherence bridge on new and old concrete; on screeds and plasters in joints before concrete pours,
- in production of repair and thin layer patching mortars,
- in production of dustfree floor coverings,
- in production of tile fixing and masonry mortars,
- in production of abrasion and chemical-resistant surfaces etc.

## ADVANTAGES

**INKA-SL**, providing excellent adherence, flexibility and waterproofing;

- is ready to use,
- increases abrasion resistance,
- increases resistance against freeze & thaw cycles,
- does not have any adverse effects (like corrosion) on reinforcement,
- increases chemical resistance of mortar/concrete reducing shrinkage,
- prevents fast setting times reducing shrinkage,
- is non-toxic.

## TECHNICAL DATA

- **Appearance:** Milky white liquid
- **Specific Gravity (@20°C):** 1,01 ± 0,02 kg/l
- **pH:** 4,0 - 9,0
- **Storage:** 12 months when kept unopened and away from freezing temperatures
- **Packaging:** 6 kg, 30 kg PE bins and 200 kg steel/PE barrels
- **Complies with:**
  - BS 6319 b
  - ASTM C1059/ C1059M

Bonding Agent - Acrylic Based

(latex bonding agents suitable for brush, broom or spray applications to bond fresh concrete to hardened concrete)

## APPLICATION

**Surface Preparation:** The substrate should be cleaned from all loose particles, dust, dirt and grease. The cleaned surface should be wetted with a brush or sponge. **(especially absorbant surfaces)**

**Preparation of Materials:** Aggregates should be well graded and washed thoroughly. Particle size of sand should be adjusted according to the thickness of the plaster/mortar needed for the surface.

	<b>SAND</b>
up to 2 mm thickness	0 - 0.5 mm
2 - 5 mm	0 - 1.0 mm
5 - 15 mm	0 - 3.0 mm
above 15 mm's	0 - 7.0 mm

**INKA-SL** should be added to clean mixing water in the ratio of 1 : 1 to 1 : 4. (water : SL)

**Application:** As a bonding coat **INKA-SL** - Water (1 : 1) should be mixed with cement and the slurry should be applied onto the prepared surface. if the area has a dense steel reinforcement, the application can also be made by pouring the slurry into the detailed area.

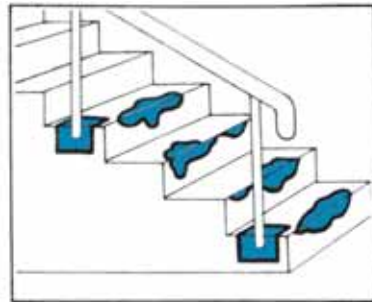
The mortar application should subsequently be made whilst the bonding coat is still wet.

## ATTENTION

- Floor coverings, mortars and plasters prepared with **INKA-SL** should be cured correctly.
- Mortar should be protected from freezing temperatures.
- Excessive air-entrainment should be avoided through over-mixing.
- Do not use **INKA-SL** and water as a bonding agent alone. Always add cement to the mix.
- Do not use the product below +5°C.
- **INKA-SL** should be protected from freezing temperatures. If accidental freezing occurs, the thawed product should not be used.
- Tools and equipment might be cleaned with water immediately after use as it will be very difficult to physically remove the residues after the product fully cures.

## HEALTH & SAFETY

- Contains acrylic dispersion. Incase of contact with skin and eyes, wash with plenty of water.
- Mechanical ventilation might be needed when used in small spaces and/or in spaces with insufficient ventilation.





## Water Resistant Bonding & Repair Agent for Mortar



### CONSUMPTION

Consumption of **INKA-SL** in kg/m<sup>2</sup> per cm thickness;

**INKA-SL : Water**

		1 : 1		1 : 2		1 : 3		1 : 4	
w/c ratio →		0.5	0.8	0.5	0.8	0.5	0.8	0.5	0.8
1 : 1		2.3	3.0	1.5	2.1	1.1	1.5	0.9	1.2
1 : 2		1.4	1.9	0.9	1.3	0.7	1.0	0.6	0.8
1 : 3		1.1	1.5	0.7	1.0	0.5	0.8	0.4	0.6

↑ cement/sand

~ 5 - 7 kg in 1 m<sup>3</sup> mortar. Exceeding this amount may have a negative effect on strengths due to excessive entrained air.



### TECHNICAL SERVICES

Our technical support team is ready to answer all your questions concerning our product line.

For additional information, please contact our headquarters.

Material Safety Data Sheet of this product can be obtained from [info@inka.com](mailto:info@inka.com) or from our regional sales representatives.

